

## Support Desk for Foreign Residents

Knowledgeable volunteers will provide support for foreigners and assist them in necessary procedures at the City Office.

[Location] No. 12 Counter, Public Hearing Section, Suginami City Office (1F)

[Languages and Consultation Schedule]

English: 1:00 ~4:00 p.m. on Mondays

9:00 a.m. ~ noon on Fridays

Chinese: 9:00 a.m. ~ noon on Mondays

1:00 ~4:00 p.m. on 1<sup>st</sup>, 3<sup>rd</sup>, and 5<sup>th</sup> Fridays

Korean: 1:00 ~4:00 p.m. on 2<sup>nd</sup> and 4<sup>th</sup> Fridays

\*National holidays and year-end/New Year holidays are excluded.

## Japanese Classes

Suginami Association for Cultural Exchange will introduce you to volunteer Japanese classes.

■LTC Tomo no Kai Asagaya				
Date	Time	Fee	Lesson	Level
Tue./Thu.	10:30 ~12:00	10 weeks (once a week) ¥3,000	Group Lesson	Introduction Beginner Practical
		10 weeks (twice a week) ¥6,000		
Tue.	13:15 ~14:40	10 weeks (once a week) ¥2,000	Private Lesson	Intermediate Advance
	14:50 ~16:15			
■Nihongo Koryu Club				
Date	Time	Fee	Lesson	Level
Wed.	9:30 ~10:30	5 lessons ¥2,000	Private Lesson	Beginner Intermediate Advance Daily Conversation Business
	10:00 ~11:00			
	11:00 ~12:00			
■ACCESS LANGUAGE LEARNING Group				
Date	Time	Fee	Lesson	Level
Mon.	9:00 ~10:30	5 lessons ¥4,000	Private Lesson	Beginner ~ Advance Level
	10:30 ~12:00			
Fri.	9:00 ~10:30	5 lessons ¥4,000	Private Lesson	Japanese Language Proficiency Test
	10:30 ~12:00			

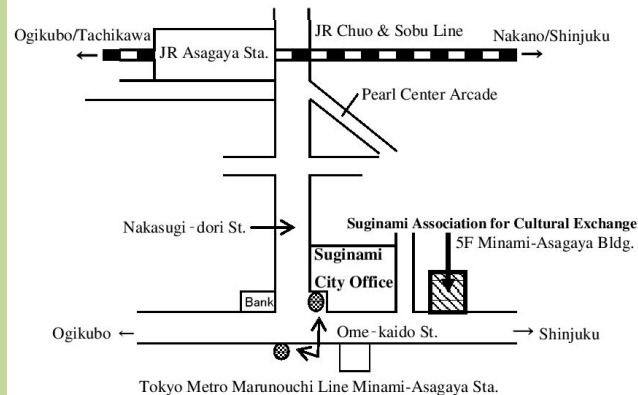
## Membership

We will send you our free newsletter every month.

### Application

Phone, mail, fax, or e-mail SACE with your address, name (include furigana reading), gender, nationality, phone number, fax number, and e-mail address.

## Map and Access to SACE



### Business Hour

Monday to Friday 8:30 a.m. - 5:15 p.m.

[except for national holidays and year-end/  
New Year holidays]

10 minute-walk from JR Asagaya station

1 minute-walk from Tokyo Metro

Minami-Asagaya station

## SACE

**Suginami Association for Cultural Exchange**

5F Minami-Asagaya Building, 1-14-2,

Asagayaminami, Suginami-ku, Tokyo 166-0004

TEL 03-5378-8833 FAX 03-5378-8844

E-mail [info@suginami-kouryu.org](mailto:info@suginami-kouryu.org)

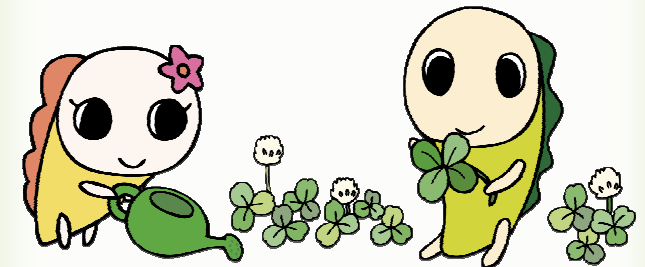
HP <http://www.suginami-kouryu.org/>

Fb <http://www.facebook.com/suginami.kouryu>

Connecting People and Communities

# SACE

Suginami Association for Cultural Exchange



© SUGINAMI CITY



# Our Mission

## SACE, Connecting People and Communities

Suginami Association for Cultural Exchange aims to create a safe and vigorous multicultural society by promoting close relationships with local communities and people.



# Our Vision

### 1. Support services for foreign residents

We provide opportunities such as Japanese lessons and consultation service to support foreigners living in Suginami City.

#### Welcome Party

In order for both foreign and Japanese residents to live in harmony, we host a seminar on disaster prevention and how to properly dispose of garbage. This event also fosters friendship among people.



#### Supporting Japanese Classes

We provide assistance to local volunteer Japanese classes to support foreign residents who would like to learn Japanese.



Support Desk for Foreign Residents  
Dispatching volunteers interpreters and more...

### 2. Promoting exchanges between friendship cities in Japan and abroad

We cohost events and tours to visit friendship cities for expansion of exchanges.

#### Visiting Friendship Cities

We organize number of tours to friendship cities in Japan and abroad, where participants can experience traditional culture and communicate with the locals.



#### Suginami Shop

Popular products from friendship cities and Namisuke (mascot of Suginami) goods are sold at the shop. It is located on the 1<sup>st</sup> floor of the City Office.



Exhibition of local products from friendship cities  
Supporting Koenji Awa-Odori dance groups and more...

### 3. Promoting mutual understanding for a multicultural society

We host events to learn about different cultures in order to live in harmony with people from different countries and backgrounds.

#### Foreign Culture Seminar

One country is chosen each year for the introduction of its culture through lecture, music, food, and the exhibition of its local products.



#### Japanese Speech Contest

We host a Japanese speech contest for foreigners who would like to show their Japanese language skills. Japanese people could learn a lot from their speech.



Introductory foreign language lessons  
Lectures on international understanding and more...

For more details and photos of our other activities to fulfill our mission, please visit our website.